

TIREBOSS™ 2

Tire Pressure Control

PROFESSIONAL DRIVER TRAINING



KEEPS YOU MOVING

TIREBOSS™2 is a truck mounted retrofit system that allows the driver to match the tire pressure to the vehicle load and speed for optimal highway performance and safe off-road performance.

TIREBOSS™2
Tire Pressure Control

INTRODUCTION

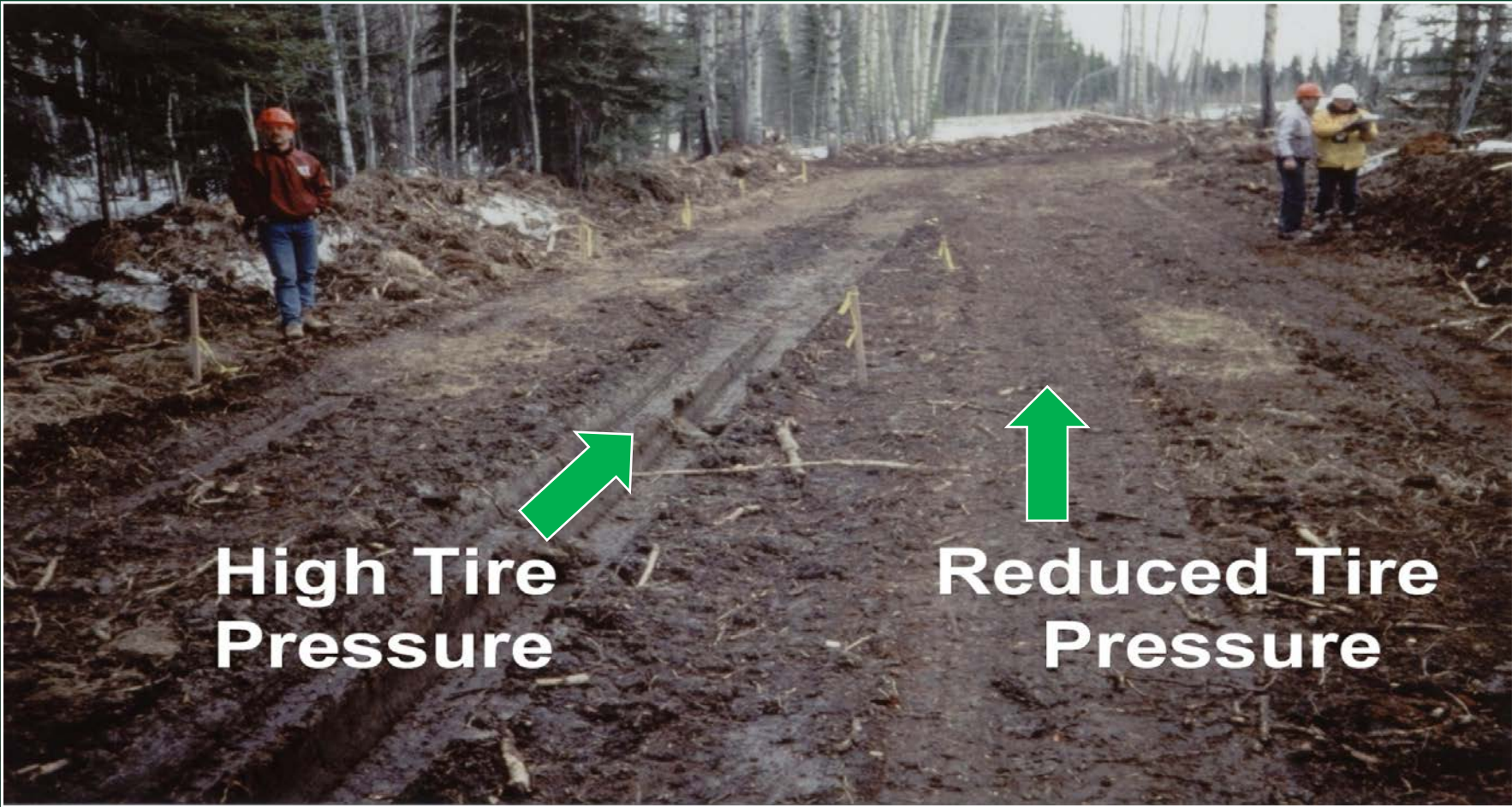


Fully inflated tire pressure : Creates a smaller footprint and concentrates vehicle weight to a small contact surface area.



Deflated tire pressure: Creates a longer footprint and distributes the load over a larger area.

DEMONSTRATED RESULTS



A reduction from 100 psi to 30 psi reduces ground pressure by approximately 70%.

TIREBOSS™ 2
Tire Pressure Control

TIREBOSS™2

Operator Guide provided
with every system.

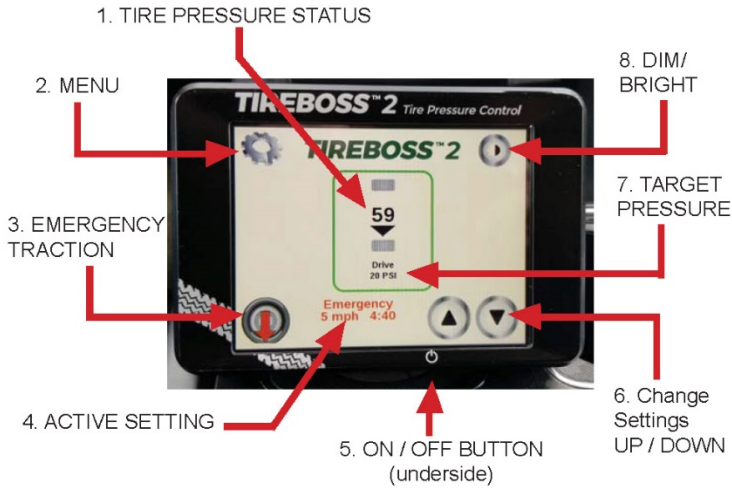
TIREBOSS™ 2 *Tire Pressure Control*

OPERATOR GUIDE



- ◆ Operation
- ◆ System Checks & Maintenance
- ◆ Support Procedures
- ◆ Emergency Procedures

TIREBOSS™ 2
Tire Pressure Control



- 1. TIRE PRESSURE STATUS**
Displays the current tire pressure, tire group name, target tire pressure and inflate or deflate actions
- 2. MENU**
Access to the settings, options and system information
- 3. EMERGENCY TRACTION**
Quick and direct access to Emergency Traction Function
- 4. ACTIVE SETTINGS**
Displays current setting, speed limit and time remaining in setting (if applicable)
- 5. ON / OFF BUTTON (underside)**
Hold button for 2 seconds to activate ON/OFF function
- 6. Change Settings UP / DOWN**
Scrolls through programmed settings
- 7. Target Pressure**
Displays target pressure for selected setting. Current Pressure may be higher than target pressure due to normal tire warming
- 8. DIM / BRIGHT**
Dims display for night operation. There are 3 levels of brightness

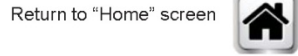
This button on each MENU screen describes the function of each button on that screen

SET "IN SERVICE DATE" (if applicable)

If the "Not in Service" alert appears on the top of Home Screen



Touch and hold the "Set In Service" button (Shield with down arrow). Verify that the In Service Date changes to the current date.



VIEW SETTINGS & CHANGING APPLICATIONS

To view or change the Application, go to the "View/Change Application" screen:



To view the pressure/speed settings, select the desired application and touch the magnifying glass to view the settings available in that application



Touch the back button to return to the "View/Change Application" screen



To change the application, select the desired application and touch and hold the "Enter" button. The application will be changed and the main "Home" screen will be displayed



NOTE: some listed applications may not be accessible (Greyed out)

DISABLE TRAILER CIRCUIT (if applicable)

This function is used only with a system that has a trailer control circuit and the trailer is not connected to truck, or when pulling a trailer that is not equipped. This will cause the TRAILER "AIR FLOW RESTRICTION" alert to activate. When this alert is displayed, a pop-up window asks the user if the trailer is disconnected. If the user responds with a "YES", then the trailer group is disabled. When the trailer group is disabled, a red "X" is located where the current pressure is normally displayed. To re-activate the valve group, once the airline is connected to the TIREBOSS equipped trailer, the user must touch and hold the red "X"

Provides operational steps and details with clear instructions

Controller Displays Visual & Audible Alerts for:

- Current Tire Pressure Reading & Status
- Vehicle Over-Speed
- Loss of Tire Pressure
- Low Air Brake Tank Pressure
- Emergency Traction



With...

- Embedded Driver Training Video
- Wi-Fi Connectivity

TIREBOSS™ 2
Tire Pressure Control

INTERACTIVE TOUCH-SCREEN



TIREBOSS™ 2
Tire Pressure Control

PROFESSIONAL DRIVER TRAINING



TIREBOSS™ 2
Tire Pressure Control



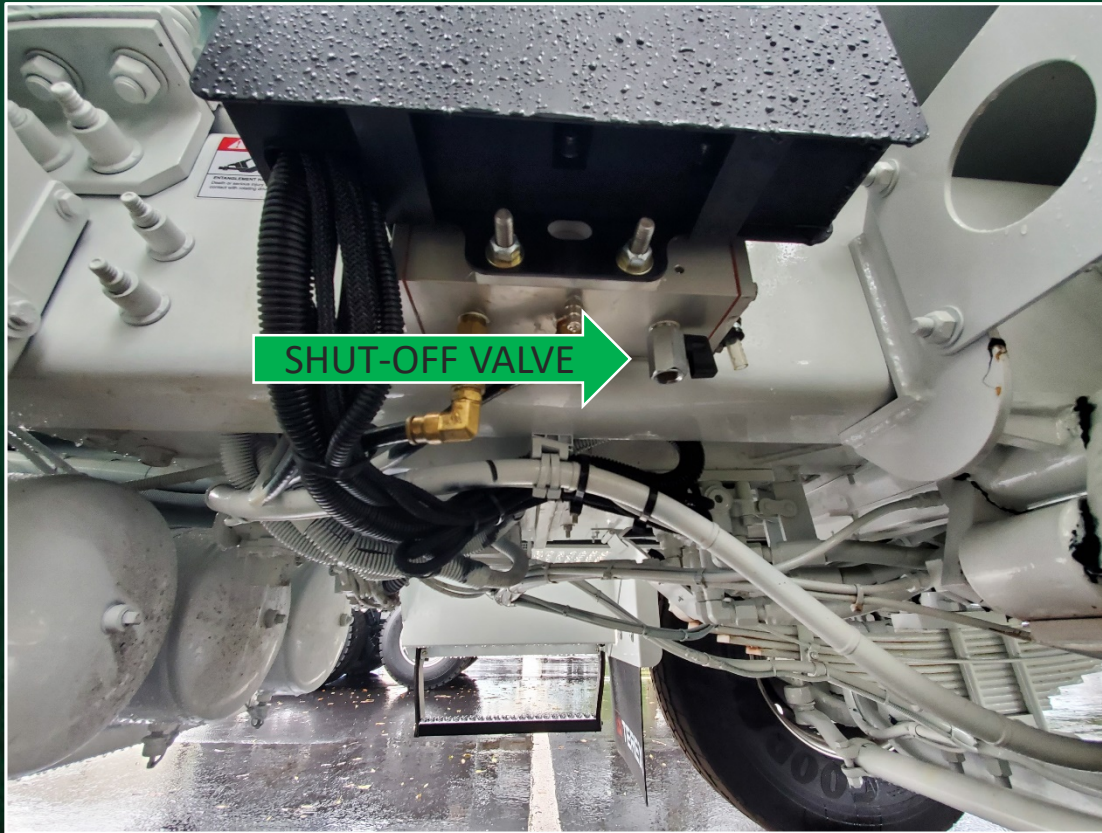
WET TANK AUTOMATIC DRAIN

When you turn on ignition switch
listen for 1 second blast (if equipped)

It will blast every 5 minutes.

Very Important!

TIREBOSS™ 2
Tire Pressure Control



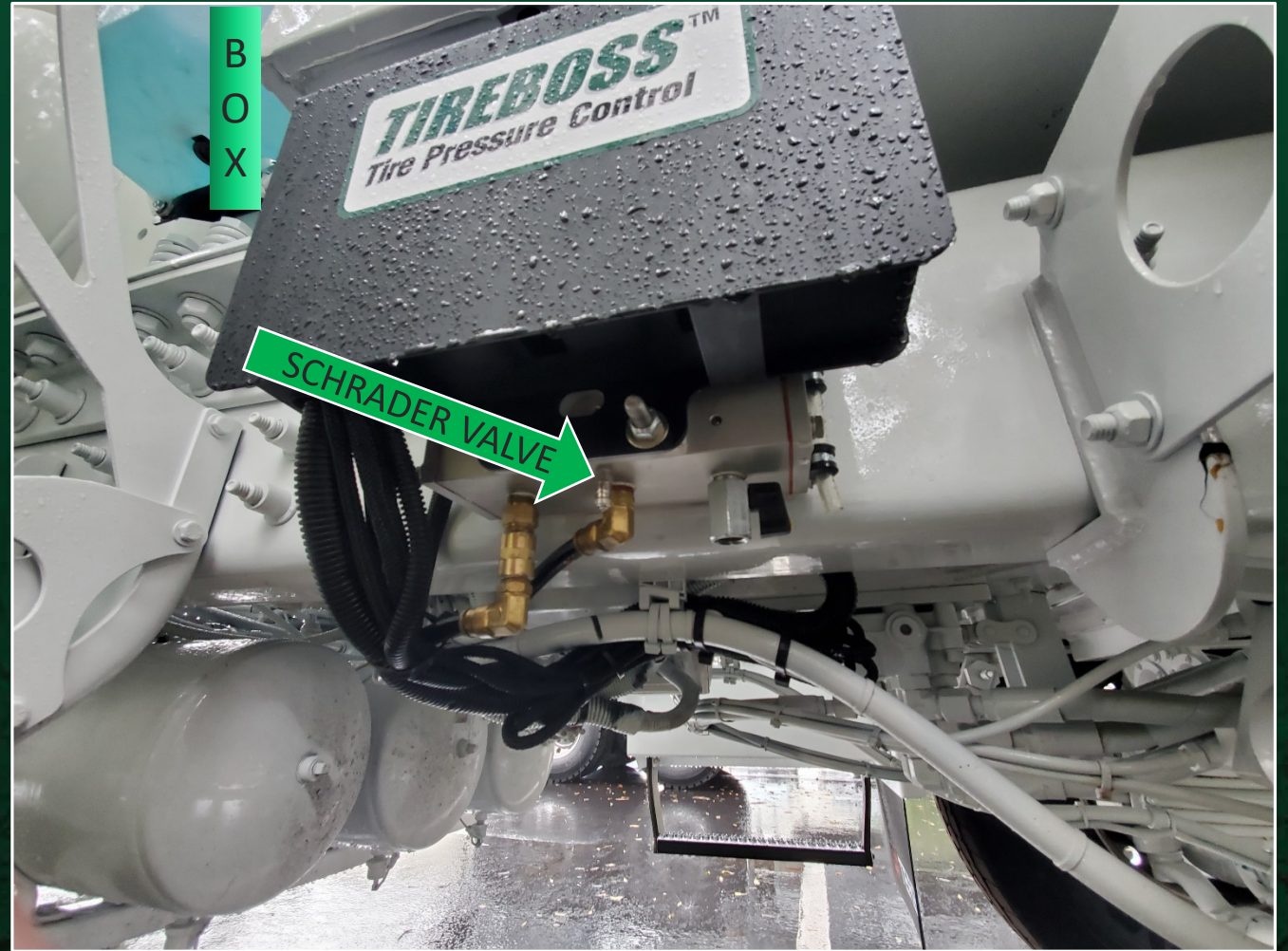
TIREBOSS™2 Manual Shut-Off Valve

In the event of a sticky exhaust cartridge simply close to stop deflate.

*Truck brake system is protected and has priority over the Tire Pressure Control

TIREBOSS™2
Tire Pressure Control

Schrader valve on valve body can be used to re-inflate all the tires in its group.



TIREBOSS™ 2
Tire Pressure Control



There are two options for drop lines:

1. Steel Core
2. Plastic Air Tubing with Steel Coil Cover

TIREBOSS™ 2
Tire Pressure Control

Drop lines must be set at least **1 inch** from tires.

Do not leave your depot if positioned incorrectly.



TIREBOSS™ 2
Tire Pressure Control

Before entering your truck,
physically verify that all wheel
shutoff valves are turned on.

If a low tire is suspected, you can
manually check individual tire
pressures at Schrader valve
located on the wheel end plate.
(one for each wheel)

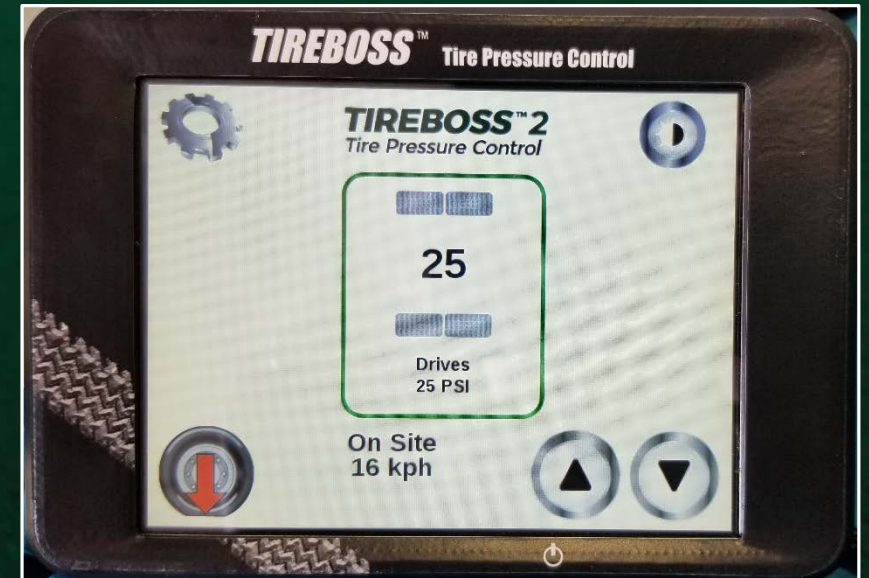


TIREBOSS™ 2
Tire Pressure Control

If your truck air drops under **75 psi**, the TIREBOSS System will display “Low Brake Air Pressure. System on Standby”.

It’s a safety feature built in to make sure your truck brake system has priority.

When the brake pressure inflates to 90 psi, the system will resume normal operation.



TIREBOSS™ 2
Tire Pressure Control

NOTE:
Air Compressor Governor Setting
@134 psi Cut Out
@115 psi Cut In

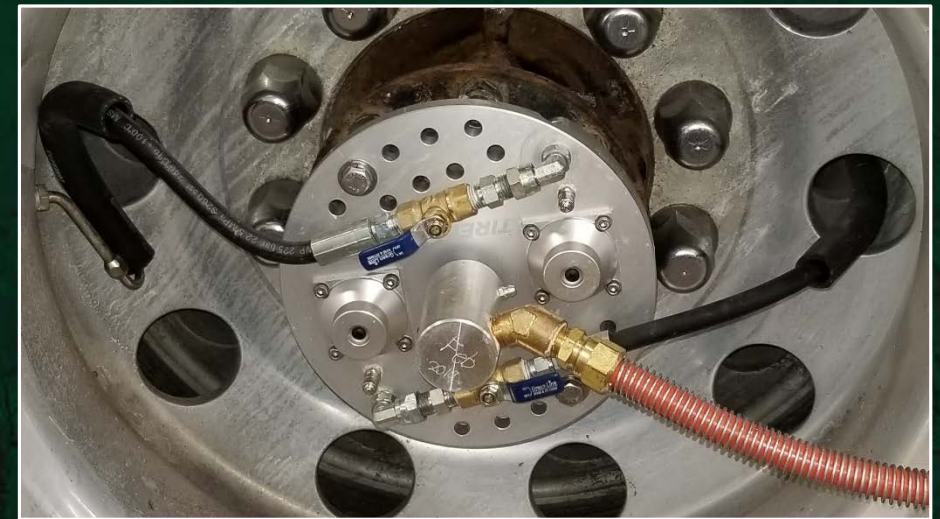
TIREBOSS™ 2
Tire Pressure Control

If you get an audible alarm and alert “Tire Pressure Loss” you must pull over and stop.

While confirming the source of tire pressure loss, first close the individual wheel shutoff valves.

If you have a failed tire, close the valve to that wheel and let the system continue to inflate all remaining tires .

Follow company protocol on breakdowns.



TIREBOSS™ 2
Tire Pressure Control

If your truck is equipped with the following features :

Diff Lock AND Inter Axle Lock

Interaxle Lock provides torque to both forward and rear drive axles. Use this feature when off-road.

Please note: Locking of the Differential Lock removes the differential action of the rear end. It is recommended for use when moving straight ahead or in reverse only.

Unlock your Differential Lock if making tight turns to allow steerability of the steer axle.

Otherwise the rear drive is pushing the truck straight while tires are turned.



TIREBOSS™ 2
Tire Pressure Control

OUR HARDWARE IS TOUGH



This Forestry Driver with TIREBOSS™ trekked about a 100 yards before he noticed the log trapped in the air lines.

Upon removing the log, all hardware remained in tact without damage.

TIREBOSS™ 2
Tire Pressure Control

The www.TIREBOSS.com website has resources for:

- Driver Training Video**
- Service Manuals & Videos**

TIREBOSS™ 2
Tire Pressure Control

Questions?

Please contact us for Sales, Service,
& Support at:

1-888-338-3587

info@tireboss.com

TIREBOSS™ 2
Tire Pressure Control